



ES-10



ES-104



CS



ES-11



ES-20



SD



Attractive fire and security
for the residential buyer or
All models have met and surpassed

Model	Outside Dimensions			Inside Dimensions	
	High	Wide	Deep	High	Wide
ES-10	364mm	416mm	396mm	214mm	294mm
ES-104	14 $\frac{1}{2}$ "	16 $\frac{1}{4}$ "	15 $\frac{3}{4}$ "	8 $\frac{1}{2}$ "	11 $\frac{1}{2}$ "
ES-11	444mm	336mm	396mm	294mm	214mm
	17 $\frac{1}{2}$ "	13 $\frac{1}{4}$ "	15 $\frac{3}{4}$ "	11 $\frac{1}{2}$ "	8 $\frac{1}{2}$ "
CS	372mm	424mm	433mm	214mm	294mm
	14 $\frac{1}{2}$ "	16 $\frac{1}{2}$ "	16"	8 $\frac{1}{2}$ "	11 $\frac{1}{2}$ "
SS	372mm	484mm	433mm	214mm	354mm
SS-4	14 $\frac{1}{2}$ "	19"	17"	8 $\frac{1}{2}$ "	14"
SST	512mm	344mm	433mm	354mm	214mm
SST-7	20"	13 $\frac{1}{4}$ "	17"	14"	8 $\frac{1}{2}$ "
ES-20	518mm	422mm	484mm	380mm	312mm
	20 $\frac{1}{4}$ "	16 $\frac{1}{4}$ "	19"	15"	12 $\frac{1}{2}$ "
SD	665mm	463mm	512mm	470mm	325mm
SD-7	26"	18"	20"	18 $\frac{1}{2}$ "	12 $\frac{1}{2}$ "
ES-30	685mm	483mm	592mm	490mm	345mm
	27"	19"	23"	19"	14"

SUPPLEMENTAL SECURITY OPTIONS AVAILABLE FOR ALL MODELS

**Double Cylindrical
keylock System**



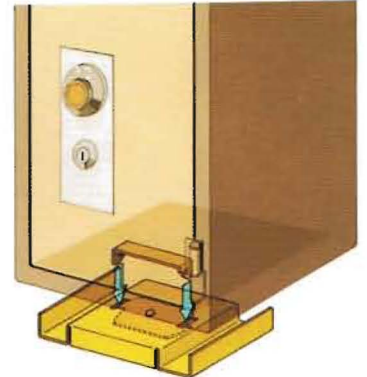
Alarm System
Portable Alarm
For All Safes



Built-in Alarm



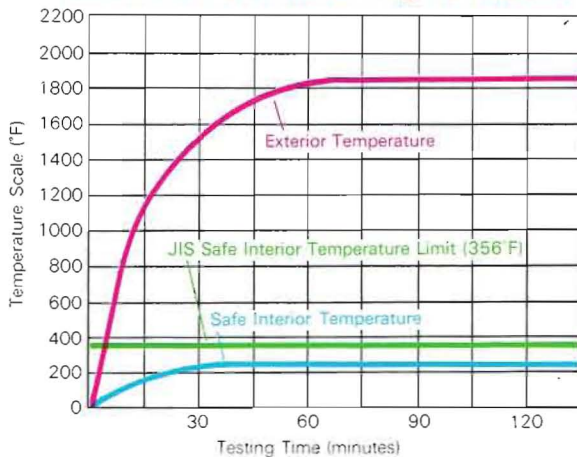
**Bolt-down Kit For
Fixing On Floor**



CERTIFIED PROTECTION

All EIKO safes have passed the rigid Japanese Industrial Standard (JIS) one/two hour Heat Endurance and Combined Explosion Hazard-Impact Test under the fire resistant safe inspection provision of JIS-S-1037-12.

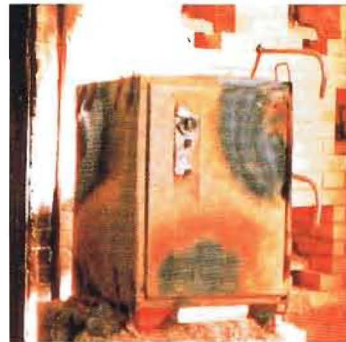
Results of the JIS Two Hour Heating Test EIKO Safes



The temperature in the airtight test furnace is gradually raised to 1000°C (1850°F) over a period of about one hour.



After the drop test, the safe is reheated in the same way and to the same temperature as in the first heat test. Note that some low-melt-point metal fittings are completely melted down.



After the heat test, the safe is dropped from a height of 4 meters (slightly more than 13 feet). This test simulates the fall of a safe to a lower floor of to the outside of a burning building.



After these severe conditions the Eiko safe is "safe," that is, your valuables are still in their original condition.